



WILDFIRE

# Quick-attack equipment with centrifugal pump

Quick-Attack Equipment (EAR) designed to be mounted on Pick Up or Chassis-type vehicles. It is part of the professional equipment of forest fire departments. It has centrifugal pump of up to 26 bar and a maximum flow rate of up to 390 l/min.

- | The motor pump unit is installed on a frame specially designed to adapt to the water tank.
- | The frame is made of folded steel plate, treated with cataphoresis against corrosion.



DATA SHEET

QR: Use your camera or bar code scanner and download the digital PDF version



## IT INCLUDES

Engine	Gasoline 14 HP
Centrifugal pump	390 l/min / up to 26 bar
Water tank	500 liters in T-shape tank, composite material reinforced with polyester

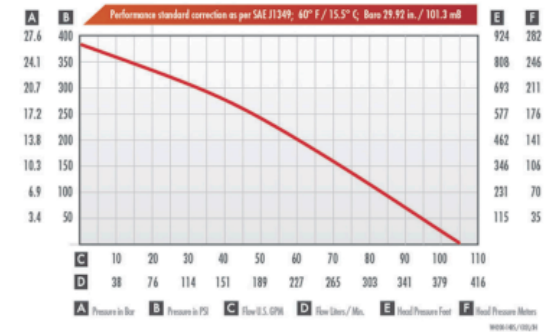
[WWW.INFOREST.COM.AR](http://WWW.INFOREST.COM.AR)  
ventas@inforest.com.ar  
comex@inforest.com.ar

REV 01 10062024

# Quick-attack equipment with centrifugal pump

DETAILS

## WICK FSP4200 PUMP



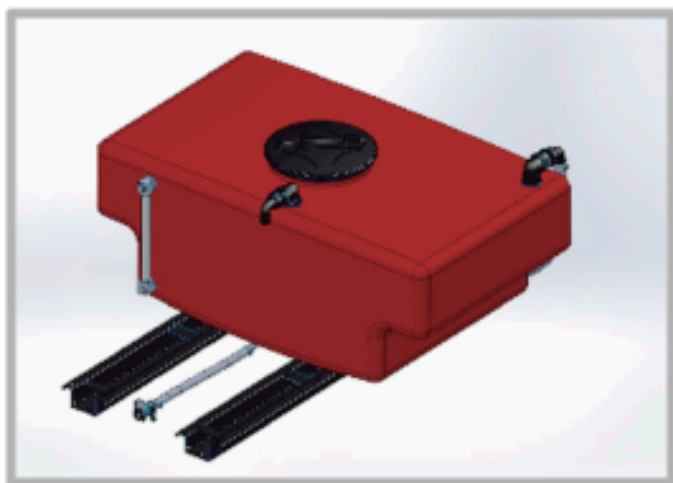
## BRIGGS AND STRATTON 14HP ENGINE



Description	It features a 4-stroke engine with over-speed protection. Besides, it has an electric starter (with an optional battery) and start-up with re-winding system.
Power	14 HP
Features	Air cooled. Cyclonic-type air filter. Motor and pump coupled by stainless steel quick adjustment system. Automatic low pressure cut-off for pump protection.

Description	4-phase centrifugal pump for improved flow rate and pressure performance. Compatible with foaming agents.
Material	Parts manufactured in aluminum. Die-cast housing with oil immersion mechanism.
Maximum pressure	26 bar (380 PSI)
Maximum revolutions	Speed booster
Dimensions	280 x 280 x 280mm
Suction	Ø 50mm (2"NPSH)
Maximum flow rate	390l/m
Power consumption	n/dHp
Maximum temperature	+ 60°C
Weight	6,7 kg
Output	Ø 38mm (1,5" NPSH)

## WATER TANK



### T-SHAPE TANK

- | Its monolithic block has excellent resistance to internal pressure and external impact thanks to its efficient structure, which fully complements the chemical and mechanical union of its parts.
- | At the bottom it has a special design for the use of a "Toro"-type lifting trolley, which allows for a quick installation and uninstallation of the kit. In addition, for greater safety, it has two high-density polyurethane reinforcements, which allow it to withstand the stresses to which it will be subjected when the kit is in operation.
- | It is equipped with a manhole in the upper central part to allow inspection and maintenance of the tank throughout its service life.

# Quick-attack equipment with centrifugal pump



### ITEMS INCLUDED

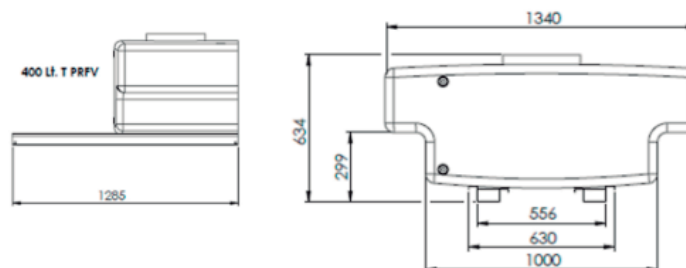
- | Overflow venting
- | Feeding tube for the pump
- | Tank filling tube
- | Optical water content level in the tank
- | Emptying tube with valve

### MATERIALS

- | Monolithic of 6,5 mm thick polyester-reinforced composite material.
- | Flame resistant.

### TECHNICAL SPECIFICATIONS

- | Capacity: 500 liters



# Quick-attack equipment with centrifugal pump

## COMPONENTS

### LOW PRESSURE KIT EQUIPMENT

Heavy-duty, lightweight rod reel for storage and transport of flat hose. Power system.



4 sections of 3-layer flexible hose of 25 mm diameter and 20 m length per section, with 25 mm stamped aluminum Barcelona fitting at the ends.



1 Inforest nozzle with adjustable flow rate, model 366. It combines from a mist to a full jet with only a quarter turn of the nozzle.  
1" (25 mm) input  
Selectable flow rates: 19-37-90-150 LPM



## WARRANTY AND CERTIFICATIONS

### WARRANTY

The warranty of the Inforest Low Pressure Equipment will be a minimum of 2 years from the start-up of the equipment, and 10 years for the tank.

### STANDARDS

The tank meets the following standards:  
> DIN 53438 – 3: Classification F1/37 m/m

### DOCUMENTATION

The equipment will be delivered with the following documentation:

- | CE conformity certificate
- | Warranty certificate
- | Operation and maintenance
- | manual Spare parts catalog

## HEALTH AND SAFETY

- | The hot parts of the engine are protected against accidental direct contact.
- | The controls and drives are easily accessible from the operator's position, i.e., in a standing position from the rear part of the pick-up vehicle where the equipment is mounted.
- | The gas outlet of the engine is oriented to avoid gas flow in the direction of the equipment operator.
- | The equipment is supplied with a user manual in Spanish, which covers safety operation aspects, precautions to be taken, PPE required for operation, and periodic revision and maintenance program to be carried out.