

Work shirt XV

USES

- | Specially designed for long working days. It offers excellent mechanical protection in daily tasks outside the fire line, at the bases, or while carrying out maintenance operations.

MATERIALS

- | 6 or 8 ounce gabardine shirt.
- | 100% cotton.

DESIGN

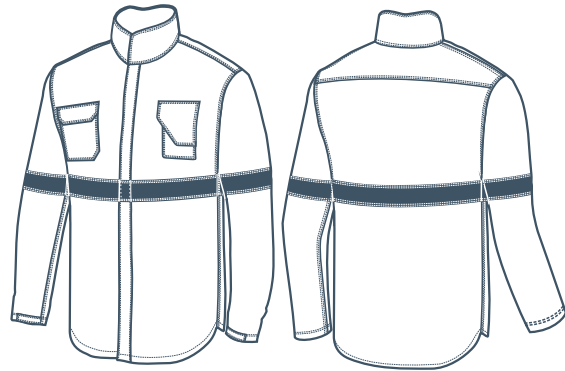
- | Its design adjusted to the exhaustive work allows the user to enjoy full mobility, and the shirt to ensure, most importantly, quick evacuation of perspiration.

CUSTOMIZATION

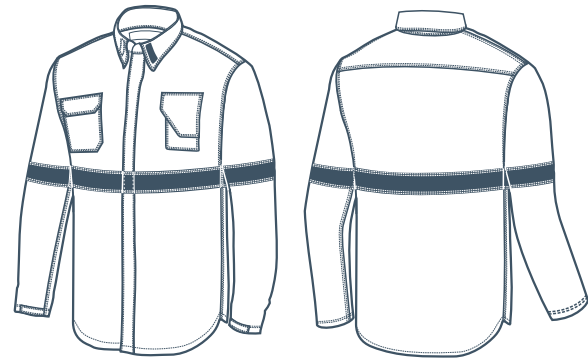
- | The shirts can be customized by:
 - Optional thermo transferred at the back, on the sleeves and on the front side achieving the unification of colors and uniformity of staff.

DATA
SHEETQR: Use your camera or bar
code scanner and download
the digital PDF version

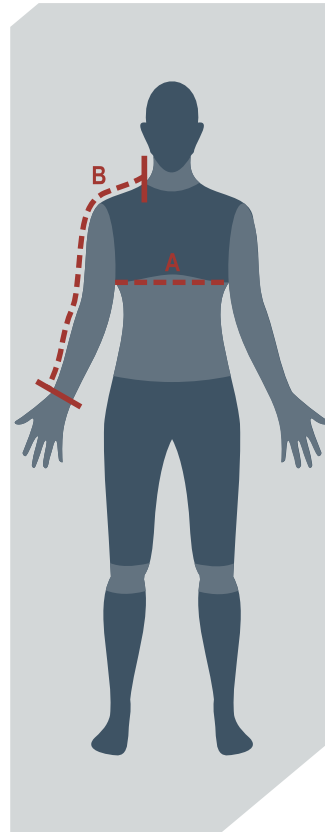
Sizes Chart Work shirt XV



Option
raised or closed collar



Option
folded or open collar



- Measurement A is the perimeter of the torso by placing the tape right below the armpit with the arms down, and in an upright body position. Take the measurement with a shirt on.
- Measurement B is taken in the same body position as in A, placing the tape from the base of the neck up to the wrist, going over the shoulder and the elbow.
- Sizes not shown in the table are considered special, so they may differ in cost and delivery time.

The chart shows the measures of the body, not the ones of the garment

GARMENT	Measure/size	XS (36)	S (38/40)	M (42/44)	L (46/48)	XL (50/52)	XXL (54/56)
SHIRT	A-Chest	Less than 82 cm	Between 83/92 cm	Between 93/102 cm	Between 103/112 cm	Between 113/122 cm	Between 123/132 cm
	B-Sleeve length	Up to 70 cm	Up to 70 cm	Up to 75 cm	Up to 80 cm	Up to 85 cm	Up to 85 cm