

## Work overall XVI

### DESIGN AND MATERIALS

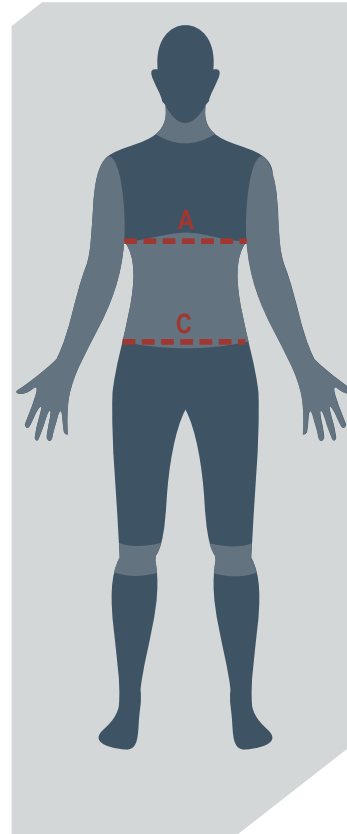
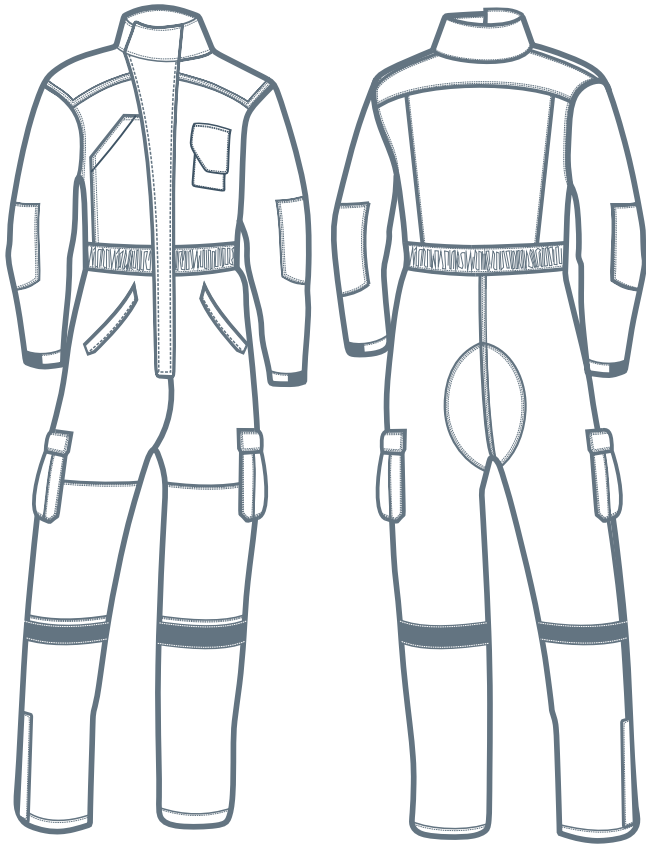
- | 100 % cotton gabardine overall with wide cut that ensures full mobility.
- | This product will allow the user to adopt the desired posture, as its ergonomic design adapts to different body positions.
- | Its elastic waistline adapts to the user's build and avoids uncomfortable points during prolonged use.
- | The tipped MAO collar design and the hem adjustable to footwear through zippers offer the best protection to the user.

### REINFORCEMENT

- | Adjustable Velcro cuffs eliminate the risk of snagging. The design has two reinforced side cargo pockets with double seams to avoid deterioration.

DATA  
SHEETQR: Use your camera or bar  
code scanner and download  
the digital PDF version

# Sizes chart Work overall XVI



- Measurement A is the perimeter of the torso by placing the tape right below the armpit with the arms down, and in an upright body position. Take the measurement with a shirt on.
- Measurement C is the perimeter of the waist, measured at the height of the hip bones.
- Sizes not shown in the table are considered special, so they may differ in cost and delivery.

The chart shows the measures of the body, not the ones of the garment

GARMENT	Measure/size	XS (36)	S (38/40)	M (42/44)	L (46/48)	XL (50/52)	XXL (54/56)
OVERALL	A-Chest	Less than 82 cm	Between 83/92 cm	Between 93/102 cm	Between 103/112 cm	Between 113/122 cm	Between 123/132 cm
	C-Waist	Up to 70 cm	Up to 70 cm	Up to 75 cm	Up to 80 cm	Up to 85 cm	Up to 85 cm