



Storz adapters and reducers

USES

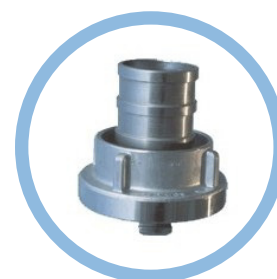
- | The Storz coupling is the coupling for firemen that spread through Europe and has become widely used in South America. By quickly matching the hose with a 120-degree turn, the operation of the Storz system is much faster and less problematic than the operation of systems with threaded couplings.

DESIGN AND MATERIALS

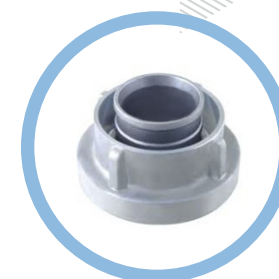
- | Storz couplings do not use threads to connect to each other; the connection is made with the bayonet locking system, so the cams are pressed to the corresponding contour of the opposite coupling, where they are fitted.
- | Their outer shape is rounded, without peaks or corners, so they are pleasant to touch and comfortable to handle, as well as resistant to dirt and wear.
- | The pieces of the Storz coupling are made of aluminum alloys.

TYPES

- | Short-tail Storz coupling for delivery, or long-tail one for suction that are assembled on the hoses
- | Transfer adapter, which has Storz joints of different measures on both sides
- | Storz male thread adapter
- | Storz female thread adapter



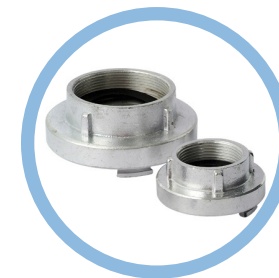
Long-tail
Storz coupling



Short-tail
Storz coupling



Storz male
thread adapter



Storz female
thread adapter

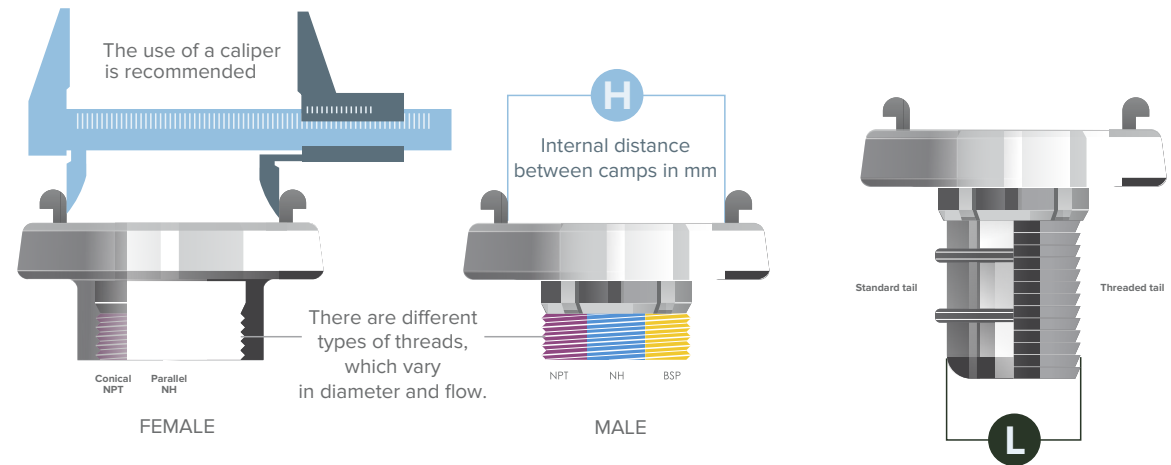


Transfer adapter



Storz adapters and reducers

DETAILS



SPECIFICATIONS	CHART OF MEASURES	
Denomination	H distance in mm	L diameter
25 D	31	25 mm / 1"
38	52	38 mm / 1 1/2"
52 C	66	45 mm / 1 3/4"
52 C	66	51 mm / 2"
65	81	63,5 mm / 2 1/2"
75 B	89	75 mm / 3"