



Euro XVI Wildland 4-Layer Jacket



Scan the QR code and find more information about our product.

Wildland jacket, made of flame-resistant fabric.

DESIGN & MATERIALS

- No treatments that wash out.
- Provides freedom of movement and rapid evaporation of perspiration, releasing body heat.
- All components are flame-resistant: fabrics, threads, reflective tapes, hook-and-loop fasteners, and quick-release closures. They prevent heat transfer from the exterior to the interior of the garment.

QUALITY

- Our EURO XV flame-resistant jackets and pants have CE Type Certification No. 22/5410/00/0161 issued by the Certification Body AITEX of Spain.
- The certifications obtained, which guarantee product quality, comply with the provisions of Regulation (EU) 2016/425. In addition, they meet national standards through harmonized standards ISO 16073-1:2019, EN ISO 15384:2020, EN ISO 13688:2013 + EN ISO 13688:2013/A1:2021, and EN 1149-5:2018.

CUSTOMIZATION

- Heat-transfer customization on the back and front; flags or embroidered patches on the sleeves.

OTHER DETAILS



— The collar can be raised and secured, providing additional protection to the user.



— Attachment straps for gear on the chest.

— Heat-transfer reflective tape.

POCKETS

Napoleon-style pockets.



— Waist straps for hanging gloves.



— The back extends into a "penguin tail" shape, providing additional body protection during various movements on the job.



— Front closure with hidden snap buttons.



— The cuff extends over the hand, offering greater protection with hook-and-loop adjustment.

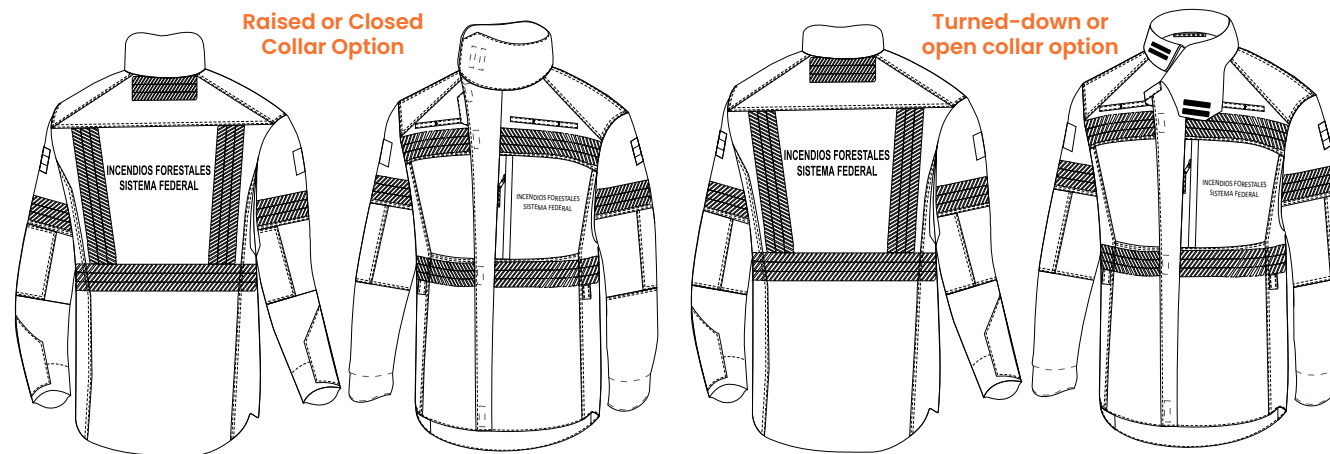


Size chart for EURO XVI Forestry Jacket

Measurement A is the chest circumference, placing the tape just below the armpit with the arms relaxed at the sides and standing in a natural posture. Take the measurement while wearing a T-shirt.

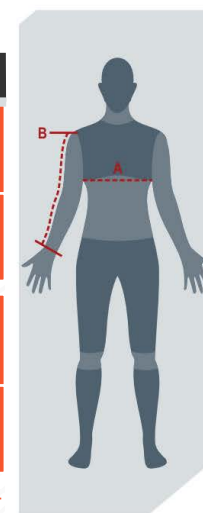
Measurement B is taken in the same position as A, measuring from the shoulder bone down to the wrist, passing over the elbow.

Sizes not listed in this chart and size XXXL are considered special sizes; pricing and delivery time may vary.



The measurements shown in the chart are body measurements, not garment measurements.

	Size	XS (36)	S (38/40)	M (42/44)	L (46/48)	XL (50/52)	XXL (54/56)	XXXL (58/60)
RECOMMENDED BODY MEASUREMENTS	A- Chest	Up to 84 cm	Between 85/92 cm	Between 93/100 cm	Between 101/108 cm	Between 109/116 cm	Between 117/124 cm	Between 125/132 cm
	B- Sleeve Length	Up to 53 cm	Up to 55 cm	Up to 57 cm	Up to 61 cm	Up to 65 cm	Up to 69 cm	Up to 71 cm
JACKET MEASUREMENTS	Chest circumference	104 cm	112 cm	120 cm	128 cm	136 cm	144 cm	152 cm
	Sleeve length	58 cm	60 cm	62 cm	66 cm	70 cm	74 cm	76 cm



REV 03 240704