



PERSONALIZATION
WITH HEAT TRANSFER



PERSONALIZATION
WITH EMBROIDERED FLAG



Euro XV Wildland 2-Layer Jacket



Scan the QR code
and find more
information about
our product.

Wildland 2-layer jacket made of flame-resistant fabric.

DESIGN AND MATERIALS

No treatments that wash out.

Provides freedom of movement and moisture evaporation, releasing body heat.

All components are flame-resistant: fabrics, threads, reflective tapes, hook-and-loop fasteners and quick-release zippers. They prevent heat transfer from the outside to the inside of the garment.

QUALITY

Our EURO XV flame-resistant jackets and pants hold CE Type Certificate No. 22/5410/00/0161 issued by the Certification Body AITEX in Spain.

The certifications obtained, which validate the quality of the products, comply with the provisions of Regulation (EU) 2016/425, as well as national standards through the harmonized norms ISO 16073-1:2019, EN ISO 15384:2020, EN ISO 13688:2013 + EN ISO 13688:2013/A1:2021, and EN 1149-5:2018.

PERSONALIZATION

Custom heat-transfer printing on back and front; embroidered flags or patches on sleeves.

OTHER DETAILS



● **Front closure:** concealed snap buttons.

● The collar can be raised and secured, providing additional protection to the user.



● Cuff adjustment with fabric strap and hook-and-loop fastener.

● Heat-transferred reflective tape
● Improved visibility during day and night.

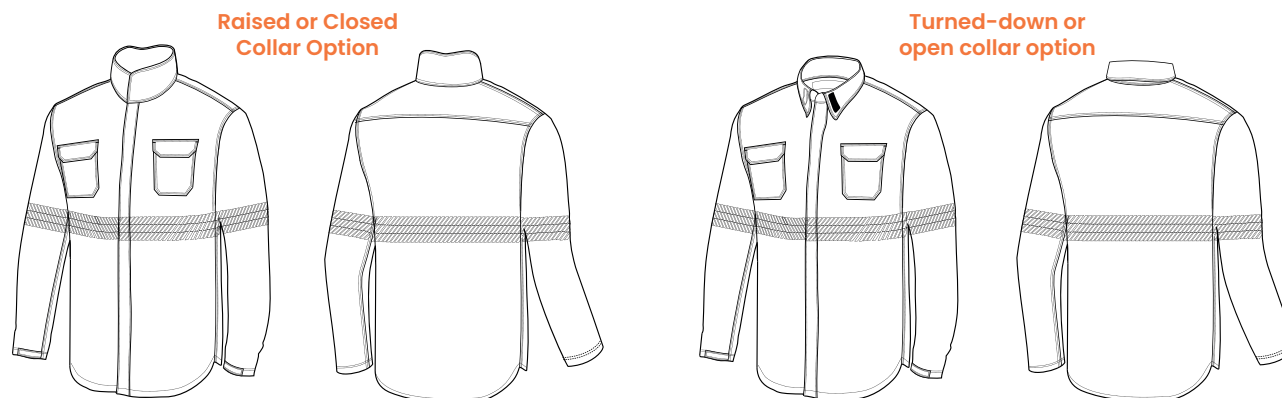


Euro XV Jacket Size Chart

Measurement A is the torso circumference, placing the tape just below the armpit with arms relaxed and in a natural body position. Take the measurement while wearing a T-shirt.

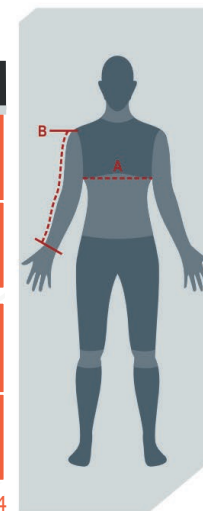
Measurement B is taken in the same position as A; it is measured from the shoulder bone down to the wrist, passing over the elbow.

Sizes not listed in this chart and size XXXL are considered special sizes; cost and delivery time may vary.



The measurements in the table refer to body measurements, not garment measurements.

	measurement / size	XS (36)	S (38/40)	M (42/44)	L (46/48)	XL (50/52)	XXL (54/56)	XXXL (58/60)
RECOMMENDED BODY MEASUREMENTS	A-Chest	Up to 84 cm	Between 85/92 cm	Between 93/100 cm	Between 101/108 cm	Between 109/116 cm	Between 117/124 cm	Between 125/132 cm
	B-Sleeve length	Up to 53 cm	Up to 55 cm	Up to 57 cm	Up to 61 cm	Up to 65 cm	Up to 69 cm	Up to 71 cm
JACKET MEASUREMENTS	Chest circumference	104 cm	112 cm	120 cm	128 cm	136 cm	144 cm	152 cm
	Sleeve length	58 cm	60 cm	62 cm	66 cm	70 cm	74 cm	76 cm



REV 03 240704