



Euro XVI Wildland fire Jacket



Scan the QR code and find more information about our product.

USES

- Wildland jacket manufactured with inherently flame-resistant fabric.
- Designed to provide freedom of movement and rapid evaporation of perspiration, allowing low thermal stress by releasing body heat.

DESIGN & MATERIALS

- Its design and construction are intended to offer greater protection to the user, preventing snagging on vegetation.
- Redesigned collar for improved closure and comfort. // Pockets were enhanced to ensure greater capacity and secure storage.
- All components are flame-resistant, including fabrics, threads, reflective tape, hook-and-loop closures, and concealed zippers that prevent heat transfer from the exterior to the inside of the garment, reducing the risk of contact burns.
- Constructed with four layers that fulfill different functions, such as mechanical protection, water repellency, thermal insulation, and low internal temperature gradients.

QUALITY

- ISO 16073-2011 Standard: "Personal protective equipment for wildland firefighting."

CUSTOMIZATION

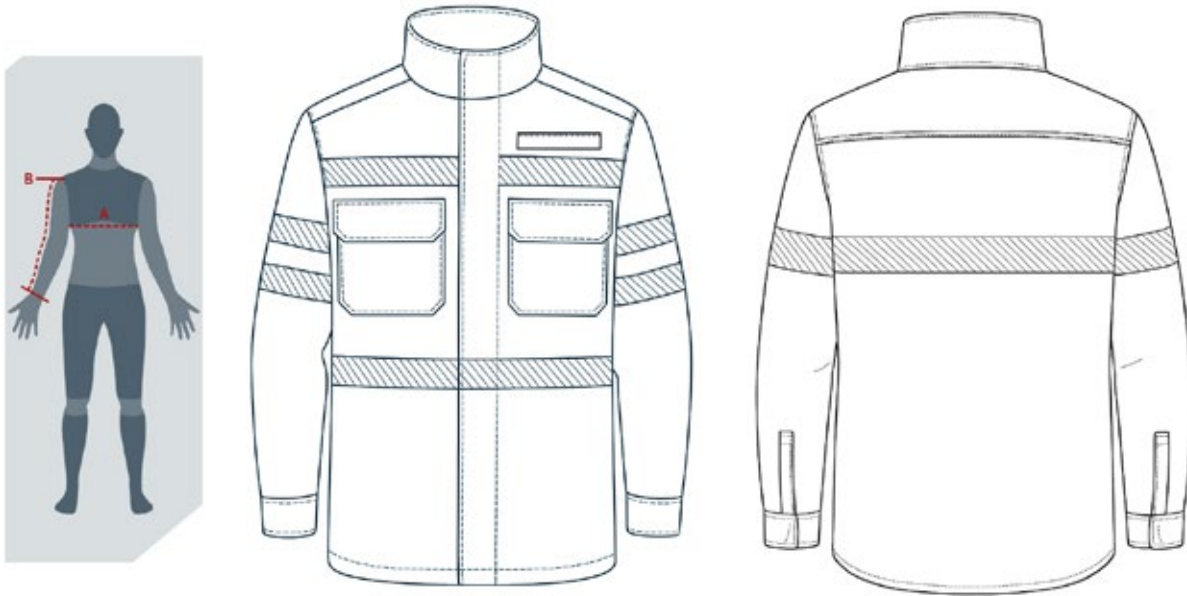
- Jackets can be customized by heat transfer with various options on the back, sleeves, and chest.

EURO XVI Wildland fire Jacket Size Chart

Measurement A is the chest circumference, placing the tape just below the armpit with the arms relaxed at the sides and standing in a natural posture. Take the measurement while wearing a T-shirt.

Measurement B is taken in the same position as A, measuring from the shoulder bone down to the wrist, passing over the elbow.

Sizes not listed in this chart and size XXXL are considered special sizes; pricing and delivery time may vary.



The measurements shown in the chart are body measurements, not garment measurements.

GARMENT	measurement/size	S (38/40)	M (42/44)	L (46/48)	XL (50/52)	XXL (54/56)
JACKET	A- Chest	Between 83/92 cm	Between 93/102 cm	Between 103/112 cm	Between 113/122 cm	Between 123/132 cm
	B- Sleeve Length	Up to 55 cm	Up to 58 cm	Up to 61 cm	Up to 64 cm	Up to 67 cm