



## Euro XVI 2 layers Work Jacket



Scan the QR code and find more information about our product.

### USES:

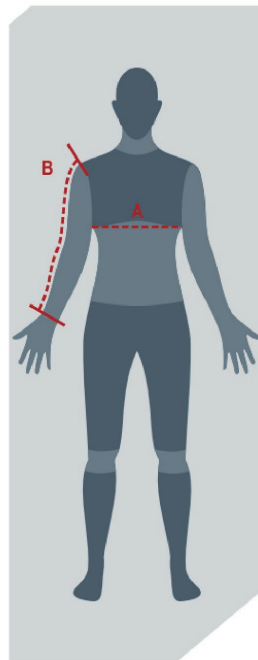
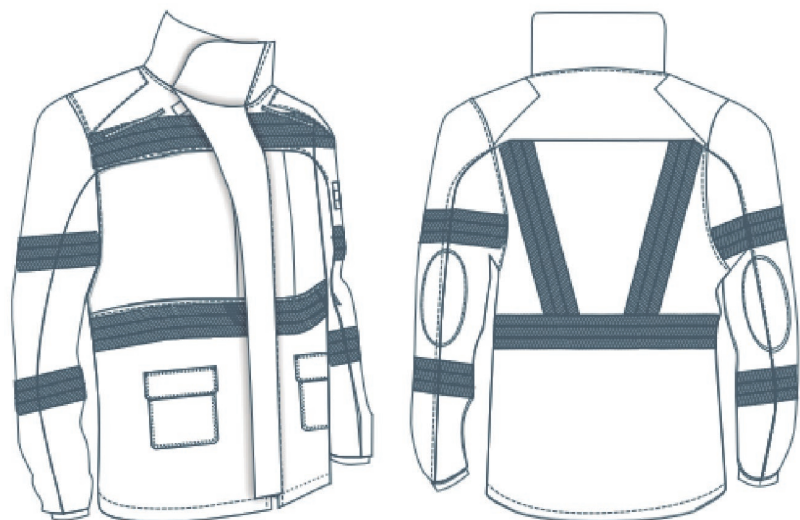
- Work jacket designed to cover long work shifts.
- Guarantees freedom of movement and ensures protection.

### DESIGN & MATERIALS

- Two-layers work jacket made of 100% cotton gabardine.
- Designed to allow rapid evaporation of perspiration.
- Penguin-style cut.
- Oriented to provide greater protection to the user against cold and during daily field tasks, preventing snagging on vegetation.
- Redesigned collar area that provides a secure and comfortable closure.
- Storage capacity and safety in the pockets.

### CUSTOMIZATION

- Jackets can be customized with various heat-transfer options on the back, sleeves, and chest.



### Euro XVI work jacket Size Chart

- **Measurement A** is the chest circumference, placing the tape just below the armpit with arms relaxed and in a natural body position. Take the measurement while wearing a T-shirt.
- **Measurement B** is taken in the same position as A; it is measured from the shoulder bone down to the wrist, passing over the elbow.
- Sizes not listed in the table are considered special sizes, so cost and delivery time may vary.

The measurements in the table correspond to body measurements and not to the garment.

GARMENT	measurement / size	S (38/40)	M (42/44)	L (46/48)	XL (50/52)	XXL (54/56)
JACKET	A- Chest	Between 83/92 cm	Between 93/102 cm	Between 103/112 cm	Between 113/122 cm	Between 123/132 cm
	B- Sleeve length	Up to 70 cm	Up to 75 cm	Up to 80 cm	Up to 85 cm	Up to 85 cm