

Euro XV wildland fire shirt

DESIGN AND MATERIALS

- | Fire-proof Wildland Fire Shirt made with inherently fire-proof fabric.
- | It does not have treatments that are lost with washing. It has technical and design features that improve the user's comfort by improving physical performance during the day.
- | This garment is designed to allow full mobility and rapid evaporation of perspiration, achieving low thermal stress by releasing body heat, thus minimizing risk in fire extinction tasks.
- | All their materials are fire-proof, from the fabric to the threads, the reflective tape, the Velcro fastenings, and hidden closing that prevents heat transfer from the outside to the inside of the garment thus avoiding contact burns.

QUALITY

- | Our fire-proof EURO XV shirts and pants have obtained the CE Certificate No. 0161/4644/16 issued by the AITEX Certification Body of Spain.

This certificate obtained by our company guarantees the quality and performance of our Fire-proof EURO XV Wildland Fire Pants and Shirts under the ISO 16073:2011 Standard "Personal Protection Equipment to Combat Wildfires".



PERSONALIZATION

- | Thermo transferred printing on the back and front, and embroidered flags or logos on the arms to provide uniformity to the work team.

DATA SHEET

QR: Use your camera or bar code scanner and download the digital PDF version



Euro XV Wildland Fire Shirt

DETAILS

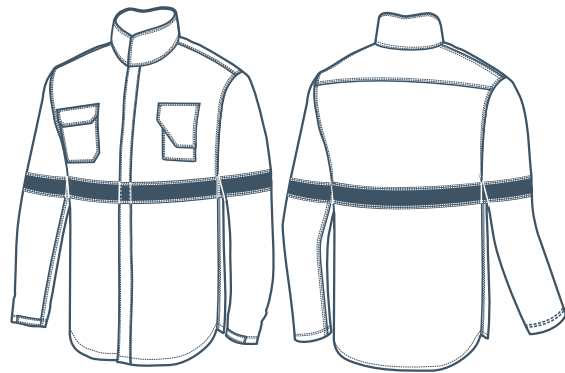


OTHER DETAILS

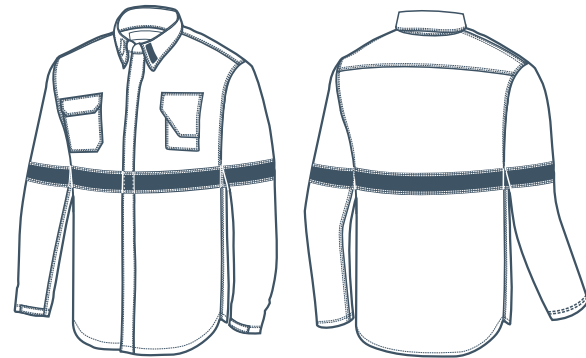
- | **Front zipper:** Covered snap fastener.
- | The collar can be raised and fastened during fire extinction tasks in order to protect the user's neck.
- | 100 % meta-aramid fire-proof reflective strap. It allows 360° vision.
- | Better visibility during day and night.
- | Cuff adjustment with textile strip and Velcro or only Velcro.



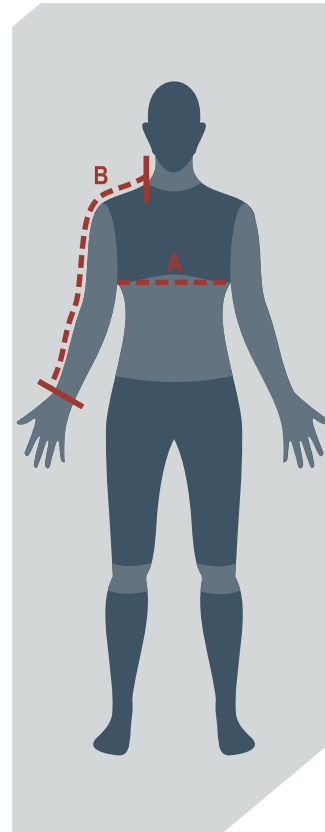
Sizes chart Euro XV wildland fire shirt



Option
raised or closed collar



Option
folded or open collar



- Measurement A is the perimeter of the torso by placing the tape right below the armpit with the arms down, and in an upright body position. Take the measurement with a shirt on.
- Measurement B is taken in the same body position as in A, placing the tape from the base of the neck up to the wrist, going over the shoulder and the elbow.
- Sizes not shown in the table are considered special, so they may differ in cost and delivery time.

The chart shows the measures of the body, not the ones of the garment

	measure/size	XS (36)	S (38/40)	M (42/44)	L (46/48)	XL (50/52)	XXL (54/56)	XXXL (58/60)
RECOMMENDED BODY SIZES	A-Chest	Less than 84cm	Between 85/92cm	Between 93/100cm	Between 101/108cm	Between 109/116cm	Between 117/124cm	Between 125/132cm
	B-Sleeve Length	Less than 53cm	Less than 55cm	Less than 57cm	Less than 61cm	Less than 65cm	Less than 69cm	Less than 71cm
SHIRT SIZES	Chest circumference	104cm	112cm	120cm	128cm	136cm	144cm	152cm
	Sleeve Length	58cm	60cm	62cm	66cm	70cm	74cm	76cm