

Euro XV wildland fire overall

DESIGN AND MATERIALS

- | Overall made of inherently fire-proof fabric, without treatments that are lost with washing. Fabric that feels soft in contact with the skin. Ergonomic design of wide cut that allows movement without restrictions.
- | The fabric allows the elimination of perspiration and body heat, which added to the colors used, decreases solar radiation absorption, reducing thermal stress factors. The seams have an anti-snagging design that offers great resistance to all kinds of effort. The reinforcements and the seams are carefully designed so that they do not interfere with the user's activities by avoiding uncomfortable points during prolonged use.
- | All their materials are fire-proof, from the fabric to the threads, the reflective tape, the Velcro fastenings, and hidden closing that prevents heat transfer from the outside to the inside of the garment thus avoiding contact burns.

QUALITY

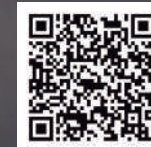
- | **ISO 16073-2011 Standard:** "Wildland firefighting personal protective equipment"



Tipped MAO collar

DATA
SHEET

QR: Use your camera or bar code scanner and download the digital PDF version



Euro XV wildland fire overall

PRODUCT DETAILS

POCKETS

- The design has two reinforced side cargo pockets with double seams to avoid deterioration.

COLLAR AND HEM

- The design of the tipped MAO collar protects the upper part of the neck. The hem adjusts to footwear through an inverted pleat with fire-proof zipper.

Hem with a system that adjusts to footwear



Upper pocket



Elastic waistline



Upper pocket



Adjustable cuffs

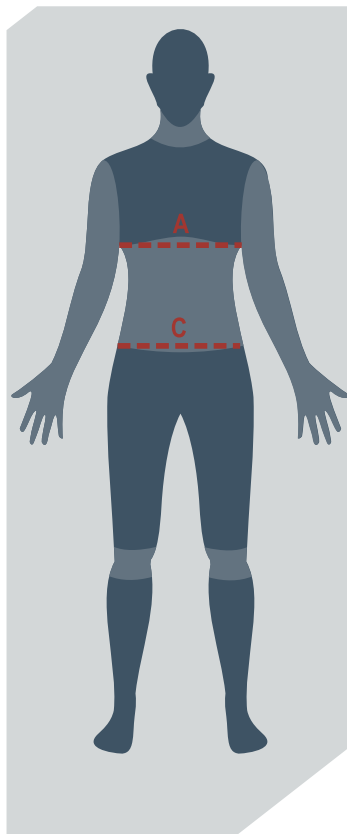
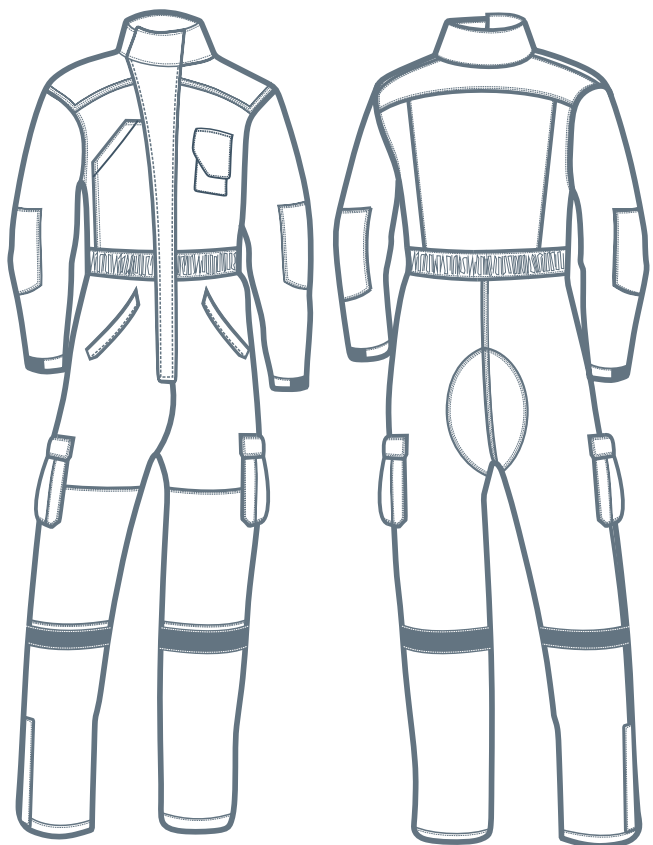


ERGONOMIC DESIGN

- This product will allow the user to adopt the desired posture, as its ergonomic design adapts to different body positions.
- Its elastic waistline adapts to the user's build and avoids uncomfortable points during prolonged use.
- Adjustable Velcro cuffs eliminate the risk of snagging.



Sizes chart Euro XV wildland fire overall



- Measurement A is the perimeter of the torso by placing the tape right below the armpit with the arms down, and in an upright body position. Take the measurement with a shirt on.
- Measurement C is the perimeter of the waist, measured at the height of the hip bones.
- Sizes not shown in the table are considered special, so they may differ in cost and delivery.

The chart shows the measures of the body, not the ones of the garment

GARMENT	Measure/size	XS (36)	S (38/40)	M (42/44)	L (46/48)	XL (50/52)	XXL (54/56)
OVERALL	A-Chest	Less than 82 cm	Between 83/92 cm	Between 93/102 cm	Between 103/112 cm	Between 113/122 cm	Between 123/132 cm
	C-Waist	Up to 70 cm	Up to 70 cm	Up to 75 cm	Up to 80 cm	Up to 85 cm	Up to 85 cm