

Euro XV wildland fire jacket

DESIGN AND MATERIALS

- | Excellent-fit fire-proof Wildland Fire Jacket made of inherently fire-proof fabric, which improves technical performance thanks to its design and functional technical details. This garment is designed to allow full mobility and rapid evaporation of perspiration, achieving low thermal stress by releasing body heat, thus minimizing risk in fire extinction tasks.
- | All their materials are fire-proof: from the fabric to the threads, the reflective tape, the Velcro fastenings, and hidden zippers that prevents heat transfer from the outside to the inside of the garment thus avoiding contact burns.
- | This garment is made of 4 layers, each performing different functions ranging from mechanical protection, water repellency to thermal insulation, and low internal temperature gradients.

- | Both its design and manufacture are aimed at offering greater protection to the user by avoiding the shirt getting hooked in the vegetation and thus efficiently increasing mobility without disregarding safety. The collar's re-design provides perfect closure and comfort and the new pockets improve storage capacity and safety.

CUSTOMIZATION

- | The jackets are customized through different THERMO TRANSFERRED options at the back, on the sleeves and on the front side.

QUALITY

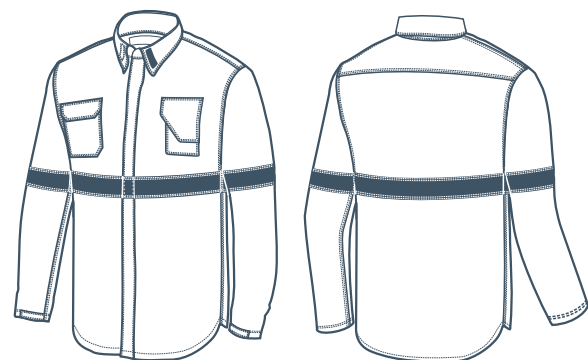
- | ISO 16073-2011 Standard: "Wildland firefighting personal protective equipment"

DATA
SHEETQR: Use your camera or bar
code scanner and download
the digital PDF version

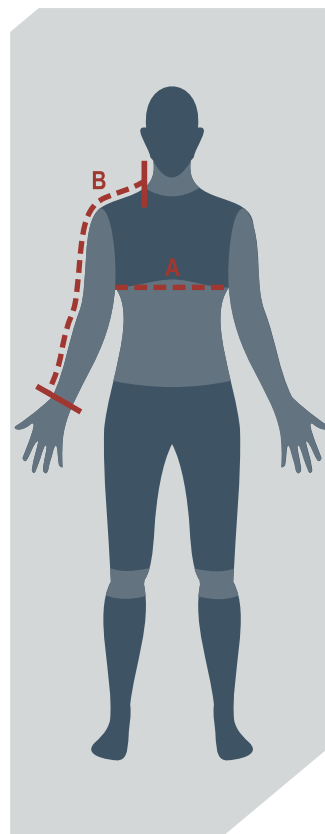
Sizes chart Euro XV wildland fire jacket



Option
raised or closed collar



Option
folded or open collar



- Measurement A is the perimeter of the torso by placing the tape right below the armpit with the arms down, and in an upright body position. Take the measurement with a shirt on.
- Measurement B is taken in the same body position as in A, placing the tape from the base of the neck up to the wrist, going over the shoulder and the elbow.
- Sizes not shown in the table are considered special, so they may differ in cost and delivery time.

The chart shows the measures of the body, not the ones of the garment

GARMENT	Measure/size	XS (36)	S (38/40)	M (42/44)	L (46/48)	XL (50/52)	XXL (54/56)
SHIRT	A-Chest	Less than 82 cm	Between 83/92 cm	Between 93/102 cm	Between 103/112 cm	Between 113/122 cm	Between 123/132 cm
	B-Sleeve length	Up to 70 cm	Up to 70 cm	Up to 75 cm	Up to 80 cm	Up to 85 cm	Up to 85 cm