



Euro XV 1-layer Work Jacket



Scan the QR code and find more information about our product.

USES

Designed to withstand long work shifts, offering mechanical protection during tasks performed outside the fire line.

Suitable for use at base operations or during maintenance activities.

DESIGN & MATERIALS

Tailored design for demanding work, allowing full freedom of movement.

Facilitates rapid evaporation of perspiration.

6 oz or 8 oz twill shirt.

100% cotton.

CUSTOMIZATION

Jackets can be customized with optional heat-applied transfers on the back, sleeves, and front.

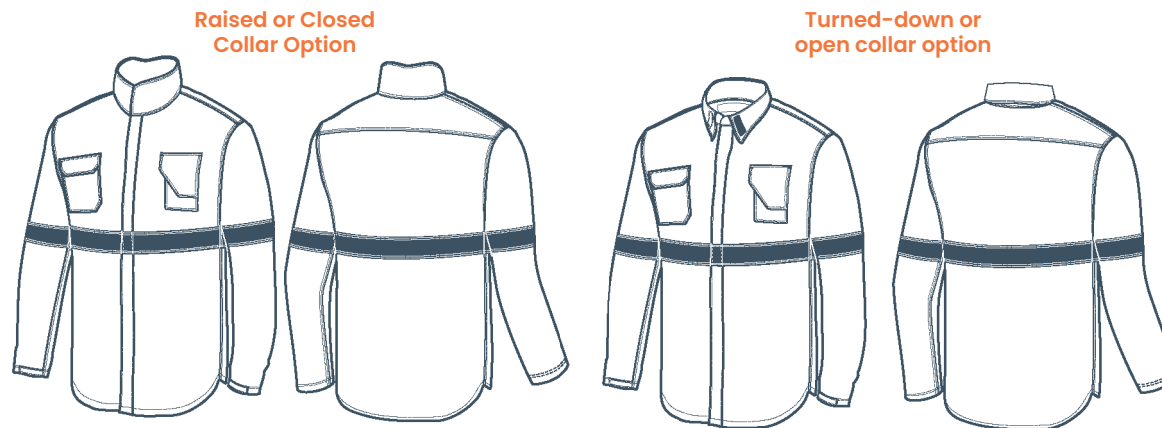
Enables color standardization and uniformity across personnel.

Euro XV Work Jacket Size Chart

Measurement A is the torso circumference, placing the tape just below the armpit with arms relaxed and in a natural body position. Take the measurement while wearing a T-shirt.

Measurement B is taken in the same position as A; it is measured from the shoulder bone down to the wrist, passing over the elbow.

Sizes not listed in this chart and size XXXL are considered special sizes; cost and delivery time may vary.



The measurements in the table refer to body measurements, not garment measurements.

GARMENT	medida/talle	XS (36)	S (38/40)	M (42/44)	L (46/48)	XL (50/52)	XXL (54/56)
JACKET	A- Chest	Less than 82 cm	Between 83/92 cm	Between 93/102 cm	Between 103/112 cm	Between 113/122 cm	Between 123/132 cm
	B- Sleeve Length	Up to 70 cm	Up to 70 cm	Up to 75 cm	Up to 80 cm	Up to 85 cm	Up to 85 cm

